

## SE Connector – West of S.E. 15th Street

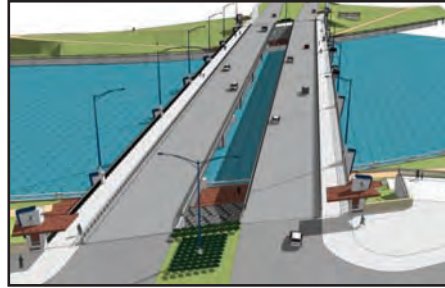
The City is currently waiting for final approval from the Iowa Department of Transportation and Federal Highway Administration to begin purchasing properties west of SE 15th Street. This Phase I project is separate from the Phase II study area east of SE 15th Street. Initial work on the Phase I bridge crossing the Des Moines River is anticipated to start late this winter.

### Bridge Design

After the City Council suggested the "enhanced" bridge for the Des Moines River Crossing include features such as pier styling, railings and similar structural enhancements, the SE Connector project team has presented its recommended bridge design.

The design incorporates elements that are both functional and aesthetically pleasing, such as:

- Two traffic lanes, an on-street bike lane and recreation trail in each direction
- Two separate bridges to accommodate future widening if necessary
- Pedestrian crossings below bridge, adjacent to the river
- Viewing stations along pedestrian trails
- Entrance piers at each corner
- Lighting and color to enhance appearance
- Attention to rail detail



### Construction Schedule

Construct SE Connector Bridges  
Construction between SW 2nd and SE 6th  
Construction between SE 6th and SE 14th

January 2008 to December 2009  
May 2009 to June 2010  
Spring 2010 to 2012 (depending on funding)

### Please Contact Us:

- **Send mail to:**  
SE Connector  
P.O. Box 8368  
Des Moines, IA 50301
- **Call:**  
1-800-797-0565
- **Send e-mail to:**  
info@seconnector.com
- **Visit the website at:**  
www.seconnector.com

Questions and comments related to the project can be submitted electronically, by phone or by mail and will be documented and responded to by a project team member.

Los materiales del Southeast Connector de la ciudad de Des Moines están disponibles en español a su solicitud.



# The Connector

Spring 2007, Issue #2

### Potential Community Impacts

- Impacts to Chesterfield Park will be avoided.
- The new road will not affect any churches in the Chesterfield neighborhood or the community center.
- The new road will provide space for a trail and sidewalks.
- A limited number of homes (16) and businesses (8) may be purchased in the future.

We need your help to make the new road become an asset to our community. We want to hear from you about:

- How will this project affect your neighborhood?
- Would you like more information?
- How about a neighborhood meeting?

Please contact us, we want to hear from you:

SE Connector  
P.O. Box 8368  
Des Moines, IA 50301  
1-800-797-0565  
info@seconnector.com  
www.seconnector.com

Los materiales del Southeast Connector de la ciudad de Des Moines están disponibles en español a su solicitud.

## Preferred Corridor Alignment Identified East of S.E. 14th Street

The proposed Southeast (SE) Connector is an arterial roadway construction project being developed by the City of Des Moines and the Iowa Department of Transportation.

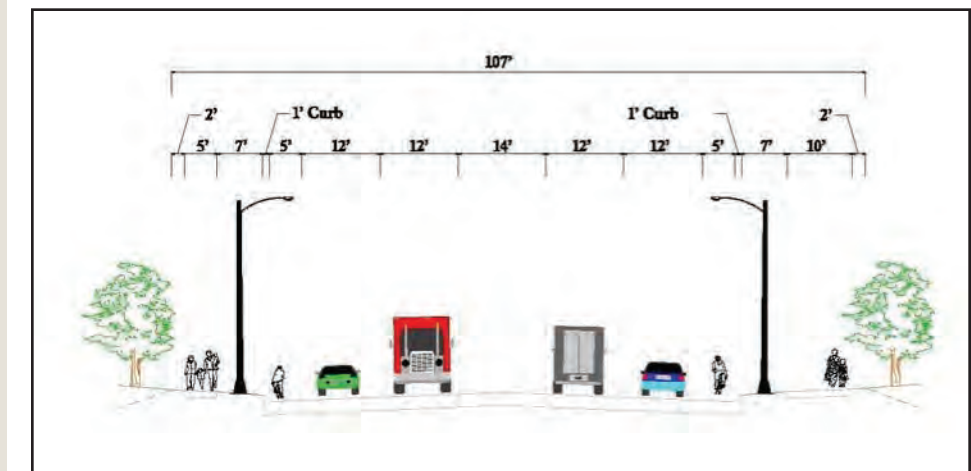
The purpose of the project is to construct a four-lane arterial roadway connecting the Martin Luther King Jr. Parkway (MLK) at Southwest 2nd Street to the U.S. 65 bypass. The proposed project is not a freeway but a four-lane road with speeds of 35 to 40 miles per hour.

The SE Connector improvements will fulfill significant and far-reaching goals for the City of Des Moines and the greater metropolitan area. Development of the SE Connector provides both local and overall benefits to the City's greater transportation system:

- Opportunities for an attractive, convenient and efficient travel corridor from which other adjacent development and redevelopment will be encouraged
- Support for redevelopment of a large area of southeast Des Moines
- Enhanced quality of life by providing improved access to such amenities as recreation, shopping, public transportation, restaurants and health services
- A safer roadway network that will accommodate future traffic and eliminate points of conflict on residential streets that are part of the existing network
- Improved goods distribution to the Central Business District and areas outside of Des Moines via quick access to Highway 65 and the Interstate system

After review of multiple possible alignment scenarios, a preferred alignment for the SE Connector has been identified. The preferred alignment passes through the Chesterfield neighborhood on the existing abandoned rail corridor and would require City purchase of up to 16 houses. The preferred alignment includes enhancements along the roadway through the neighborhood. The preferred alignment (see inside) is the result of collaboration between the City of Des Moines, concerned citizens and the project team to determine the route that will best serve current and future transportation needs of people throughout the area.

In addition to the roadway, sidewalks and bike paths will allow for pedestrian and recreational movements; new lighting in the neighborhood will increase safety; and landscaping will improve aesthetic appeal. If you have questions about the preferred alignment, please contact the Study Team using the contact information on the back.

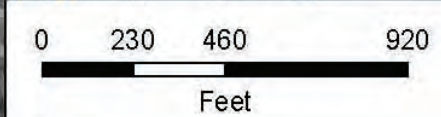
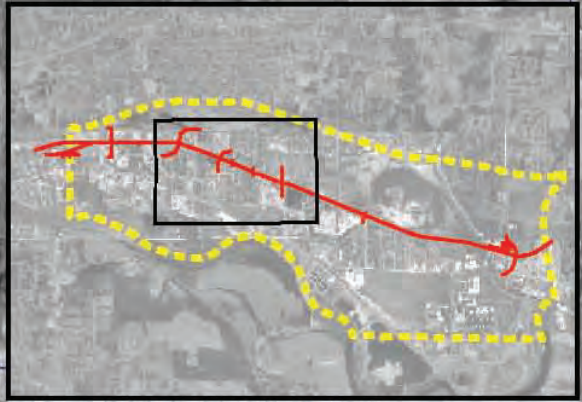
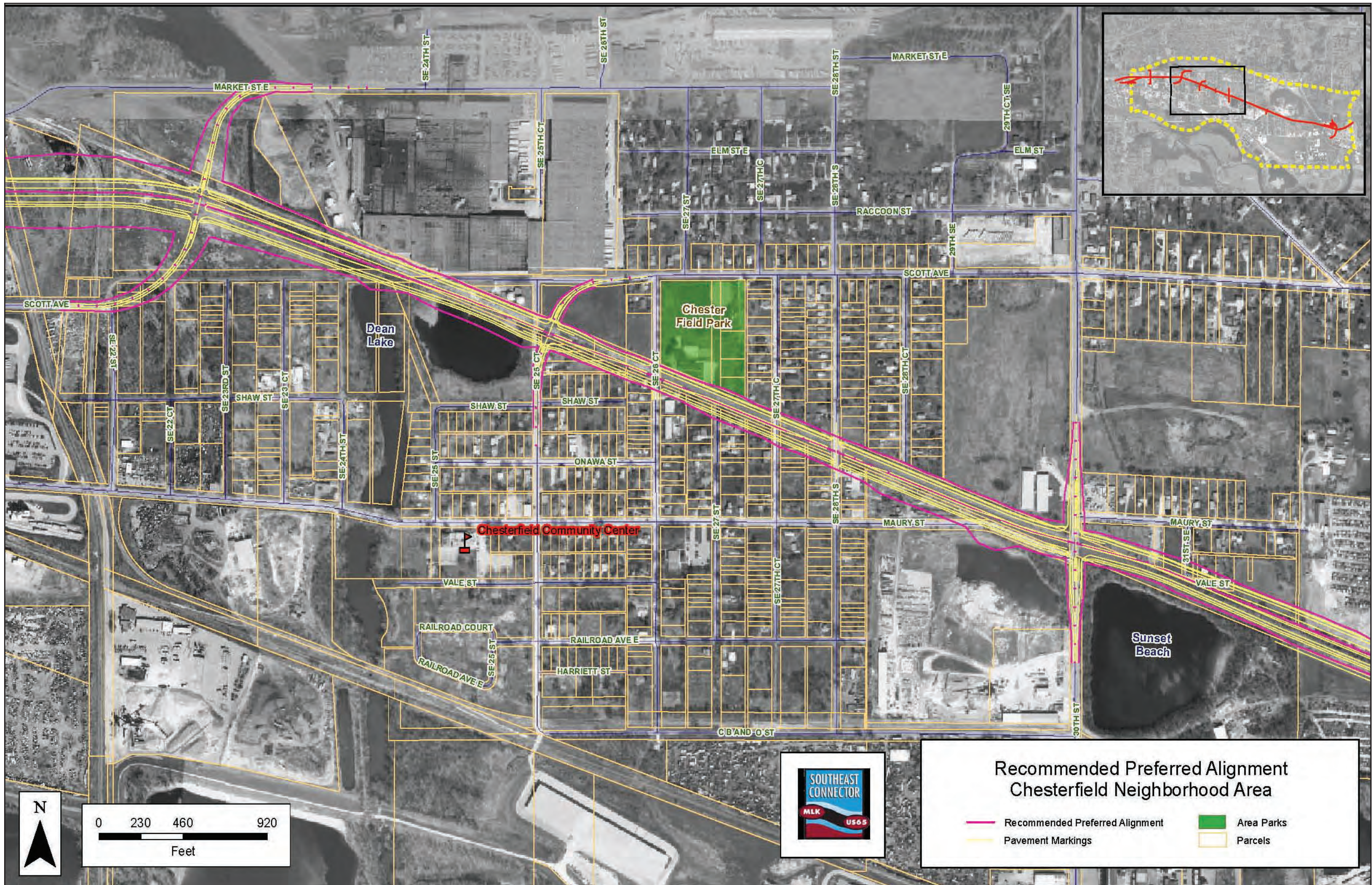


The cross section of the road includes some or all of the following elements: sidewalks, lighting and landscaping.



P.O. Box 8368  
Des Moines, IA 50301

Pre Sort STD  
U.S. Postage  
Paid  
Permit #6412  
Kansas City, MO



**Recommended Preferred Alignment  
Chesterfield Neighborhood Area**

- Recommended Preferred Alignment
- Pavement Markings
- Area Parks
- Parcels