



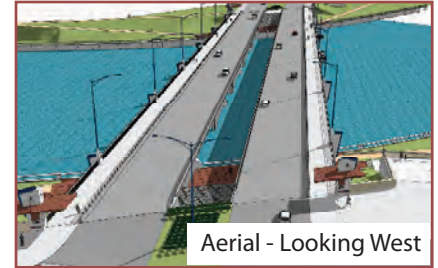
April 2008

Neighbor Notes

A discussion of project issues of importance to your neighborhood.

BRIDGE CONSTRUCTION BEGINS

The City of Des Moines, in cooperation with the Iowa Department of Transportation and Federal Highway Administration, has awarded a contract for construction of the Southeast Connector Bridges crossing the Des Moines River. This is a major step forward connecting Martin Luther King Junior Parkway to Highway 65 at the Vandalia interchange. The new bridges will extend from the existing levee near the intersection of Water Street and Elm Street (just north of Principal Park), southeasterly to the point where Raccoon Street ends near the levee on the east side of the river.



Aerial - Looking West

United Contractors, Inc. is the lead construction firm on the project. They and their team of subcontractors will construct the bridges, reconstruct the east levee where the bridges intersect it, and reconstruct the Meredith Trail (west levee) and John Pat Dorrian Trail (east levee) so that each passes below the bridges, alongside the river ballustrades. The project also includes significant work to re-align water and sewer lines along the east levee, to get them out of the way for the project.



Pedestrian Lookouts

Construction work on the utilities (east of the river) has already begun. Work on the bridge is expected to begin in May or early June, and will continue until the spring of 2010. Street construction projects for adjoining sections of the Southeast Connector will begin in 2009 and extend for several years. (See summary on the next page.)



Dorrian Trail - Looking North

Work will include pile driving in the early months, and will require heavy truck traffic and operation of heavy equipment throughout the duration of the project.

The Meredith and John Pat Dorrian recreation trails will be closed at the proposed bridge site during construction. Temporary detours are established for each trail as shown on the attached map. The detours will not go into effect until the contractor is ready to work in the existing trail areas.

The SE Connector bridges are designed with an emphasis on visual appeal to complement Riverwalk designs, the MLK Jr. Parkway design, and surrounding architecture. The bridge designs place a heavy emphasis on pedestrian use and their views of the river, the bridge, and the city. The designs are also developed to safeguard water quality in the river during construction, protect historic structures alongside the river, and accommodate other special environmental requirements.

The City of Des Moines, Kirkham Michael (project engineers), and our contractors are committed to delivering this project safely, efficiently, and with as little disruption to neighbors and businesses as possible. Please be sure to do your part by staying out of designated construction areas, and watching out for heavy equipment and truck traffic.

Call, email, or write our team to get more information at any time. Additional updates will be posted on our web site, as the project moves forward.



TRAIL DETOUR LEGEND
TRAIL SYSTEM
DETOUR ROUTE

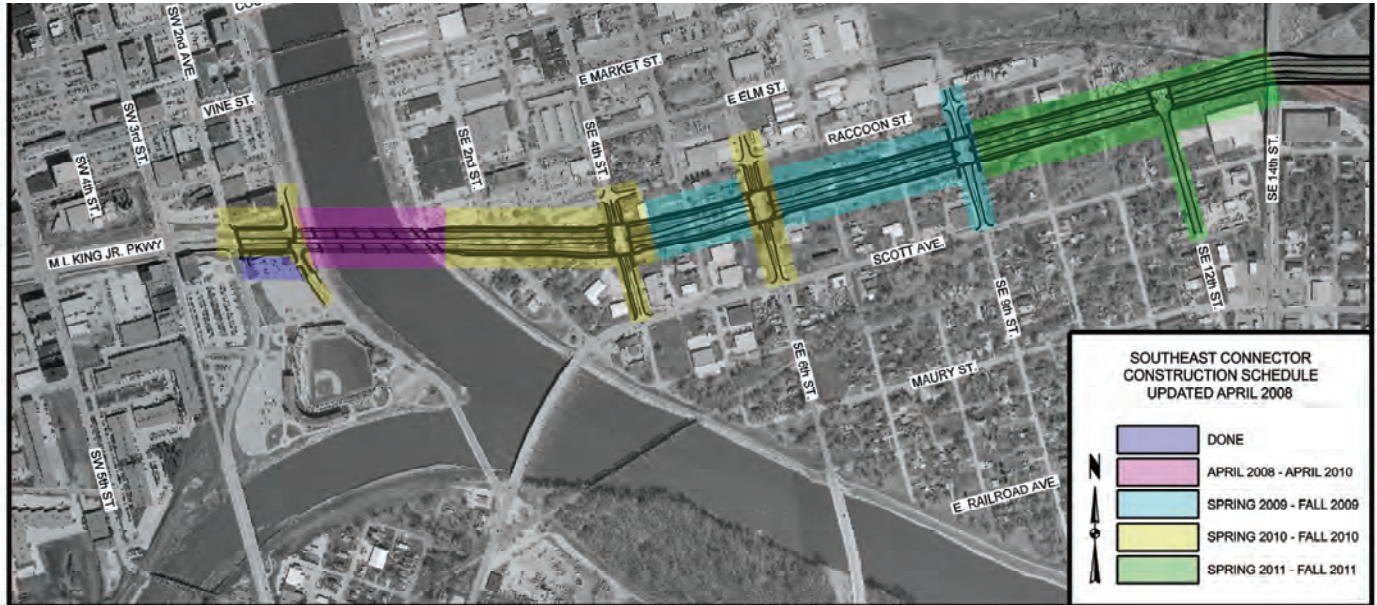
SCHEDULE

Four phases of the Southeast Connector will be constructed over the next few years. The projects are organized to minimize disruption to the public, and are coordinated with schedules for other city projects in the area.

- **SEC Bridges** - Construction is under way now, and will continue through the spring of 2010.
- **SE 4th to SE 9th** - to be constructed during 2009, concurrent with the second year of bridge construction. SE 4th and SE 6th Streets remain open to allow travel through the area, and to accommodate the recreational trail detour around bridge construction.
- **SW 2nd to Bridges, and Bridges to SE 4th** - to be constructed in 2010, as soon as the bridges are complete. Once these segments are done, the public will be able to travel from MLK Jr. Parkway, across the river, and as far east as SE 9th Street.
- **SE 9th to SE 14th** - to be constructed in 2011, or earlier if possible. The project will include a connection to SE 14th at the Maury Street intersection, probably using SE 12th Street.
- **Future phases** of the Southeast Connector will extend east of SE 14th Street, eventually connecting to Highway 65 at the Vandalia interchange. These future segments are currently being evaluated for environmental impacts, so exact location and configuration are not known. Public comment on those improvements will be solicited this summer and fall.

SOUTHEAST CONNECTOR DESIGN

- The SE Connector is designed to include two traffic lanes in each direction, with on-street bicycle lanes along each outer edge. On-street parking is not permitted. Off-street sidewalks or recreation trails parallel the route along each side.
- The SE Connector makes full-movement, signalized connections to SW 2nd, SE 4th, SE 6th, and SE 9th Streets. Partial movement intersections (limited turning allowed) are planned at Water Street and SE 12th. Driveway access directly onto the street is not planned.
- The SE Connector includes a landscaped center median, similar to what now exists on the MLK Jr. Parkway. Other amenities, including lighting and landscaping along edges will also be similar.
- The entire SE Connector alignment is designed so that widening to six lanes could be accommodated in the future, if necessary.



P.O. Box 8368
Des Moines, Iowa 50301

U.S. Postage
Paid
Permit #6412
Kansas City, MO